



POLITECNICO
DI TORINO



Erasmus+



REDEEM

Workshop on double and joint programmes





**POLITECNICO
DI TORINO**



Erasmus+



Industrial Production Engineering

Prof. Stefano Zucca
Coordinator of the Program





**POLITECNICO
DI TORINO**



Erasmus+



The Objectives

To train students in both technology and business

To offer students an international program

To expose students to the outer world





**POLITECNICO
DI TORINO**



Erasmus+



The History

European University Diploma in Industrial Production:

1986 - POLITO & University of Brighton

1995 - POLITO & École de Management Léonard de Vinci (EMLV) of Paris

Industrial Production Engineering:

2003 - POLITO & Universitat Internacional de Catalunya (**UIC**), Barcelona (Spain)

2004 - POLITO & Athlone Institute of Technology (**AIT**), Athlone (EIRE)

2011 - POLITO & **IPAG** Business School, Nice (France)





**POLITECNICO
DI TORINO**



Erasmus+



The Involvement of the Industrial World

Since 1986, the Program had the active contribution of a group of Companies that had formed an association (ASSEPI), to provide internships and to support the program.

Today ASSEPI is replaced by CSPI , the Support Committee to the Industrial Production program of the Politecnico di Torino.

The Committee operates within the "Innovation Point" of AMMA (the association of Mechanical and Mechatronic Companies in Turin's Industrial Union).

As main sponsor, the CSPI aims to assist the scientific and educational activities of the program and to provide link with the industry.





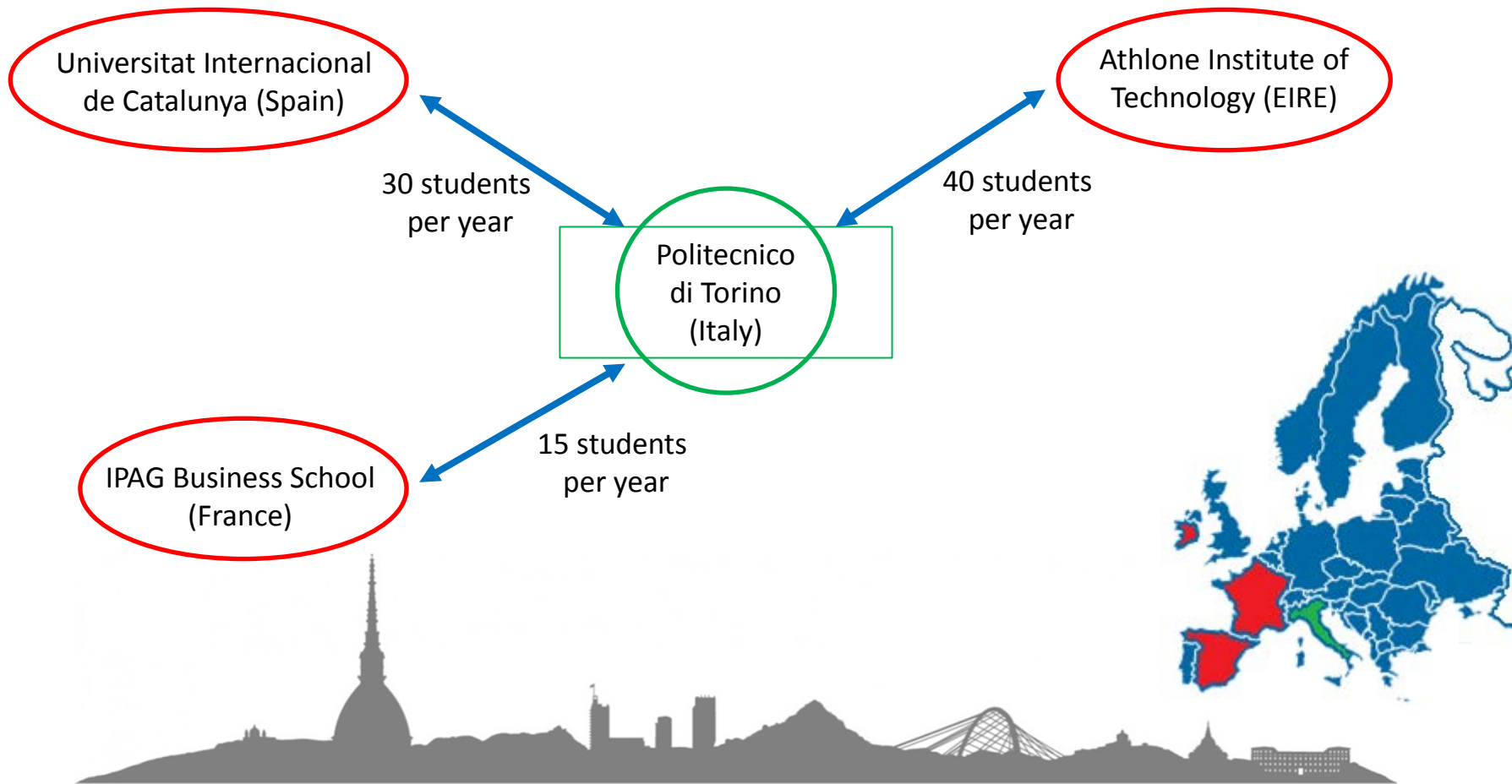
**POLITECNICO
DI TORINO**



Erasmus+



The Consortium





POLITECNICO
DI TORINO



Erasmus+



The Path

Students from Politecnico

Students from Partners

Bachelor

1st year @ Politecnico
2nd year @ Partners
3rd year @ Politecnico

1st year @ Partners
2nd year @ Partners
3rd year @ Politecnico

Master

1st year @ Partners
2nd year @ Politecnico

1st year @ Partners
2nd year @ Politecnico





**POLITECNICO
DI TORINO**



Erasmus+



The Degrees

Politecnico

Laurea in Industrial Production (3rd year)

Laurea Magistrale in Industrial Production and technological innovation (5th year)

Universitat Internacional de Catalunya

Bachelor en Tecnologia Y Producciòn Industrial (3rd year)

Master en Direcciòn da Empresas y Systemas de Producciòn (5th year)





**POLITECNICO
DI TORINO**



Erasmus+



The Degrees

Politecnico

Laurea in Industrial Production (3rd year)

Laurea Magistrale in Industrial Production and technological innovation (5th year)

Athlone Institute of Technology

Higher Certificate in Business (2nd year)

Bachelor with Honours of Business (4th year)





**POLITECNICO
DI TORINO**



Erasmus+



The Degrees

Politecnico

Laurea in Industrial Production (3rd year)

Laurea Magistrale in Industrial Production and technological innovation (5th year)

IPAG Business School

Bachelor of Business Administration (3rd year)

Diplome de Formation Superieure au Management (5th year)





**POLITECNICO
DI TORINO**



Erasmus+



The Options

1. Both 1st and 2nd level at the same Partner University
2. 1st and 2nd level at two different Partner Universities





**POLITECNICO
DI TORINO**



Erasmus+



The Syllabus **(Bachelor - 1st year)**

Mathematical analysis I
Computer science

Enterprise laws
Business management
Economics
Mathematics and Physics

Foreign Languages (9 ECTS)





POLITECNICO
DI TORINO



Erasmus+



The Syllabus (Bachelor – 2nd year - Athlone)

Human resource management
International Economics
Management control
Marketing in industries

Learning activities outside the University (12 ECTS)
Internship (12 ECTS)





**POLITECNICO
DI TORINO**



Erasmus+



The Syllabus **(Bachelor – 3rd year)**

Database and company information systems
Graphical communication and mechanical production
Materials for technological applications
Quality management systems
Energetics and Ecology
Industrial plants and safety
Operations research
Plant integrated management
Final essay (3 ECTS)





POLITECNICO
DI TORINO



Erasmus+



The Syllabus (Master – 1st year)

Corporate finance
Project management
International marketing
Logistics

Free choice course from Table 1 (8 ECTS)

Learning activities outside the University (12 ECTS)





**POLITECNICO
DI TORINO**



Erasmus+



The Syllabus

(Master – 2nd year)

Product and process innovation
Innovative manufacturing systems
Production planning and logistics
Professional ethics and industrial relations
Business Strategies

Internship (20 ECTS)
Thesis (6 ECTS)





POLITECNICO
DI TORINO



Erasmus+



The Syllabus at Partner Universities



POLITECNICO
DI TORINO

Corso di laurea magistrale
**INGEGNERIA DELLA PRODUZIONE INDUSTRIALE
E DELL'INNOVAZIONE TECNOLOGICA**
PORTALE DELLA DIDATTICA

Home > Offerta formativa > Lauree magistrali > [Ingegneria della produzione industriale e dell'innovazione tecnologica](#)

Presentazione

Informazioni utili

Aspetti economici

**Insegnamenti presso le
Università Partner**

Video presentazione

Insegnamenti presso le Università Partner



In questa sezione sono disponibili in formato pdf i contenuti degli insegnamenti erogati presso le Università partner, che gli studenti immatricolati presso il Politecnico di Torino frequenteranno durante il 1° anno all'estero.

Athlone Institute of Technology - Athlone

[Universitat Internacional de Catalunya - Barcellona](#)

Ecole Supérieure de Commerce - Nizza

Scheda istituzionale

Piano degli studi

Guida dello studente

Dipartimento

Collegio





**POLITECNICO
DI TORINO**



Erasmus+



ECTS & Grades

How to convert grades from the Partner Universities?

Equivalence Tables are available
and are made available in advance to students





**POLITECNICO
DI TORINO**



ECTS & Grades

Here is an example



Documento
Adobe Acrobat





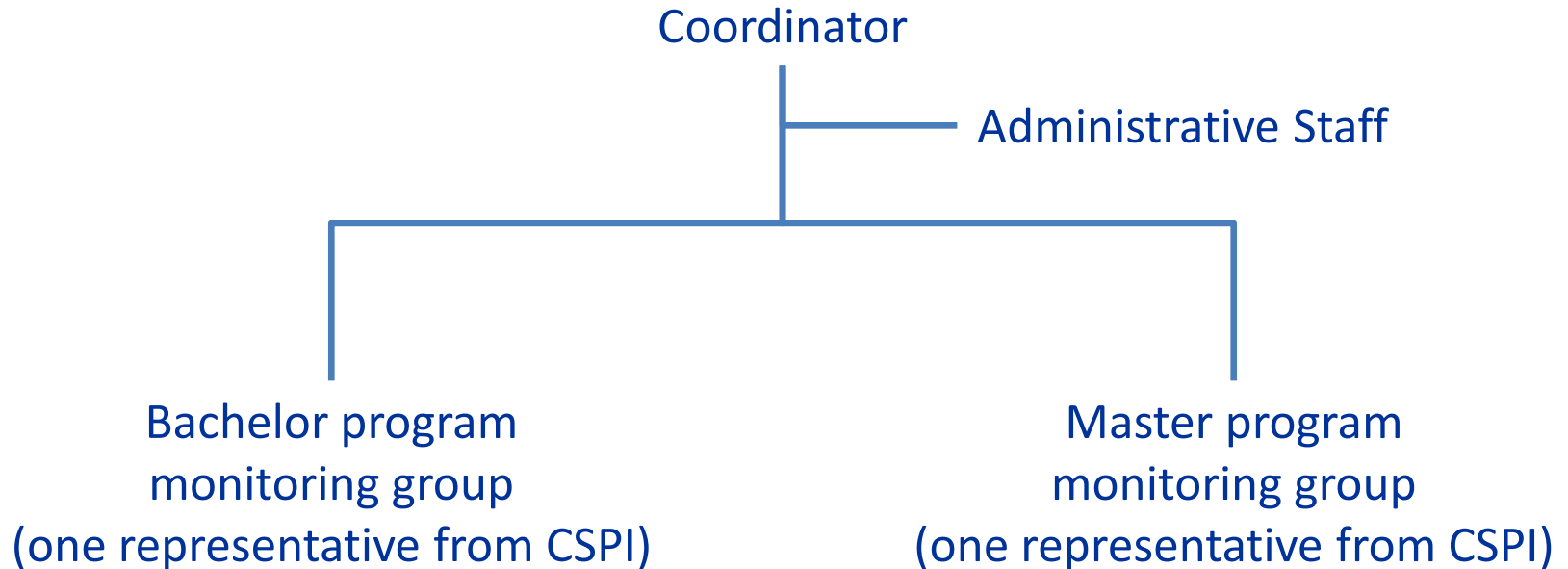
POLITECNICO
DI TORINO



Erasmus+



The Staff





**POLITECNICO
DI TORINO**



Erasmus+



The Routine

Transcripts of records for outgoing/incoming students

Documents for students' registration at Partners

Enrollment of incoming students from Partners

Paperworks for stages and final projects

Changes in the Syllabus for the next academic year





**POLITECNICO
DI TORINO**



Erasmus+



The Meetings

- Annual meetings with 1st and 3rd year students
- Annual meetings at the Partner Universities
- Annual meeting at Politecnico
- Participation to graduation ceremonies





**POLITECNICO
DI TORINO**



Erasmus+



The Erasmus rules

According to ERASMUS rules, outgoing students do not pay tuition fee at their destination.

Agreements with AIT and IPAG (Bachelor) comply with this rule.

All the other agreements state that students pay where they study.

In the 2nd case, Erasmus studentships are not admissible.





**POLITECNICO
DI TORINO**



Erasmus+



Dealing with Exceptions

Some modules do not comply with the equivalence tables...

Students want to perform their stage in the summer between Master's
1st and 2nd year...

Students want to swap Master's 1st and 2nd year...





**POLITECNICO
DI TORINO**



Erasmus+



The most important ingredients





**POLITECNICO
DI TORINO**



Erasmus+



The most important ingredients

**Agility
&
commitment**





**POLITECNICO
DI TORINO**



Erasmus+



Thank you.

