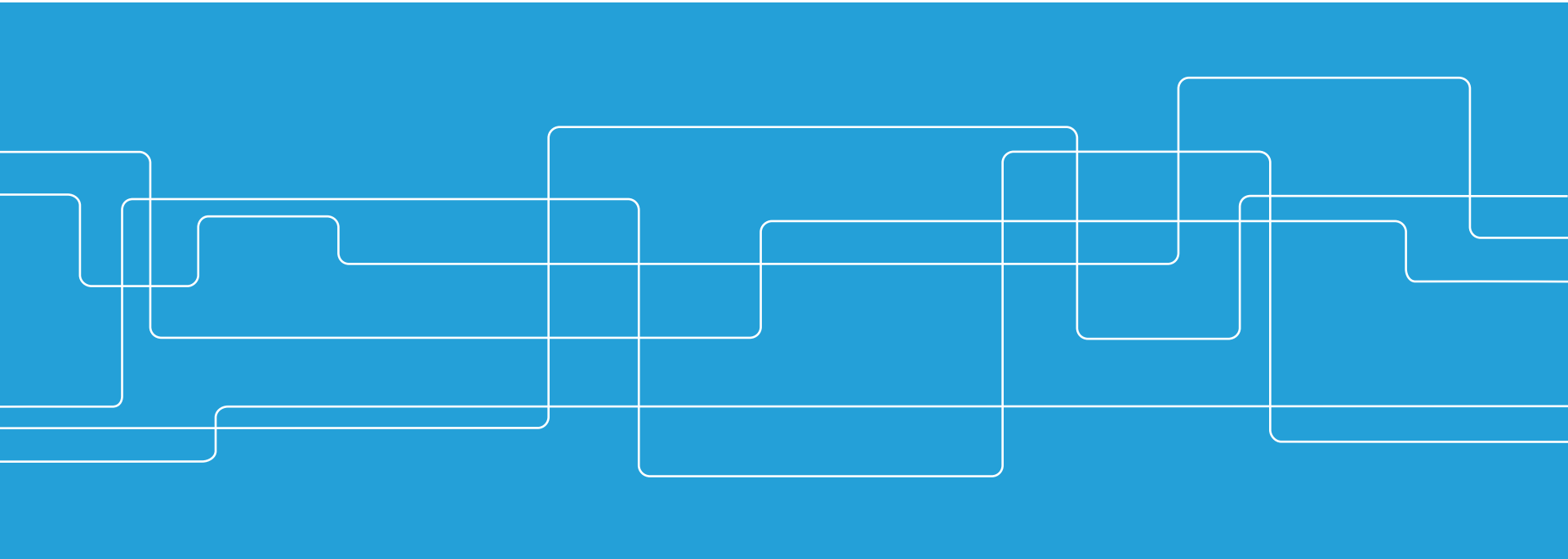




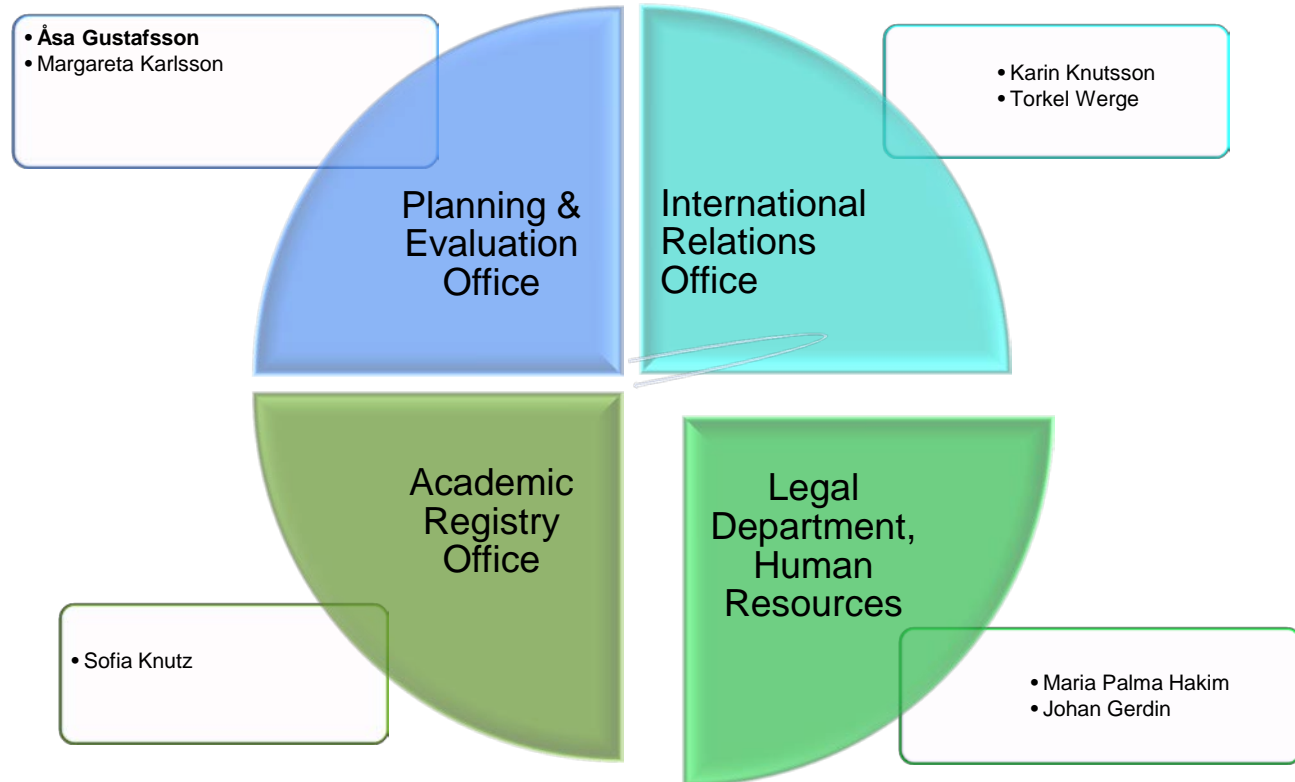
Quality Assurance

for the Admin Process of Joint Programmes

Karin Knutsson, June 2017



Central Admin Quality Assurance team





A formal group to prepare matters for programmes with a joint curriculum

The group reports to the Vice Dean of Faculty and supports the KTH academy:

- Knowledge about legal restrictions and national policies regarding joint education at all levels;
- Preparation of policy statements for KTH concerning joint education;
- Support to academics during the process of setting up a joint education programme.



First comes the degree

The academics seldom causes problems. With lessons learned – for new initiatives the KTH QA team checks that....

... the joint programme meets the degree requirements for all degree awarding universities;

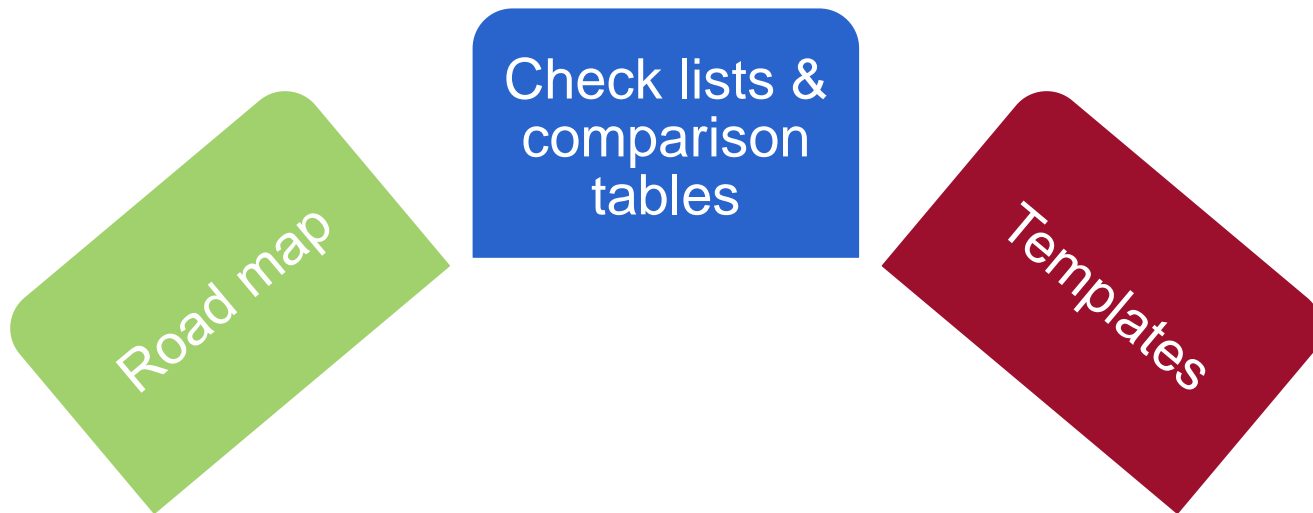
... there is a common understanding for the degree certificate;

... the Admissions requirements are OK with all partners;

... whether programme accreditation is required by any of the degree awarding partners.



Main support documents provided

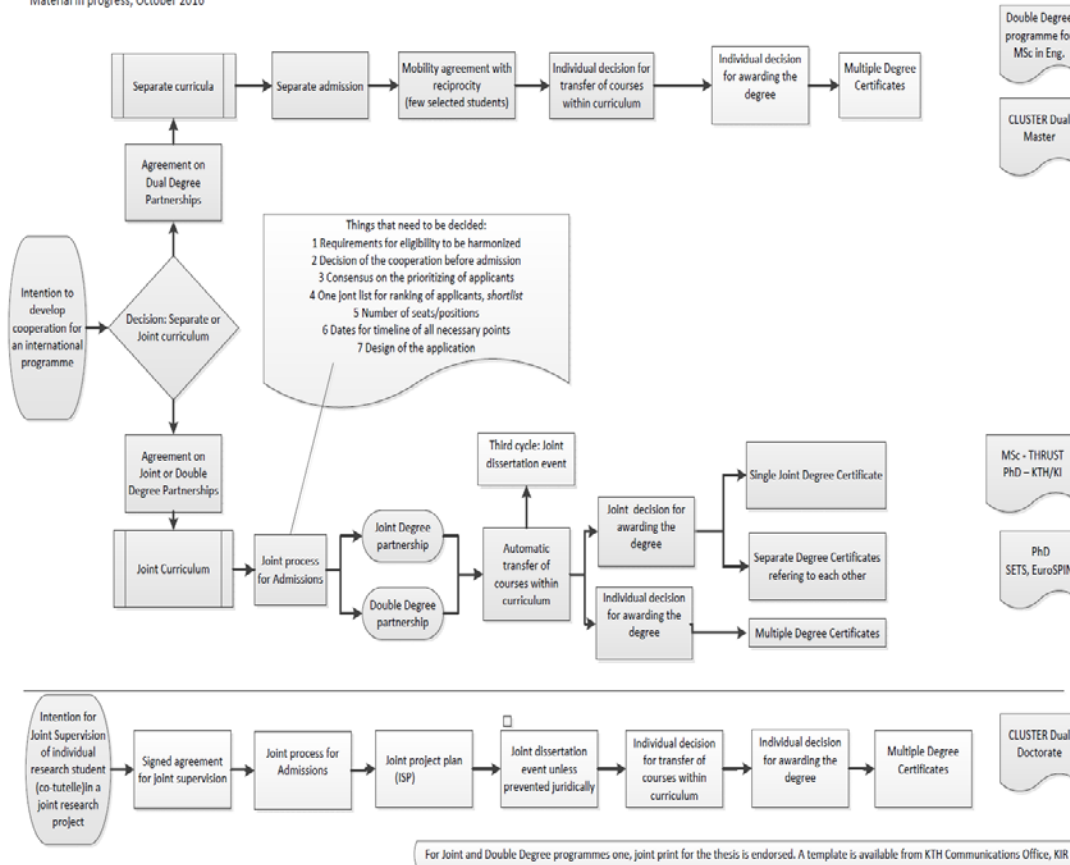


Road map

Roadmap for different forms of cooperations for education at KTH

Material in progress, October 2016

Current forms of cooperation in place at KTH:





Check lists and Comparison Tables



Rationales and Comparison Table for Joint Master Programmes Leading to Joint or Multiple Degree Certificates

This guide is a tool to bring up crucial aspects for academic cooperation for a joint programme. The aim is for the partnership to discuss vital issues and come up with a joint solution. Each partner university shall complete the document with respect to their national legislation and university policy. Further it communicates the legislation into which KTH is bound as well as its policies. The data is also to be used as a base for forming the consortium agreement as well as submitting a grant project proposal.

Joint programme name: _____

Project leader: _____

KTH, UF, Beredningsgrup för utbildningsarbetet, september 2015

1 Added value for the project and its partners¹

This section is to show the importance and relevance of the project to the university management, stakeholders and financial sponsors.

1.1 What are the goals of the project, educational, organisational, etc?

1.2 What is the added value of a joint academic cooperation for this project?

1.3 Name and motivate the choice of cooperating partners. Has there been previous educational collaboration or other forms of mobility among the partners? Shortly describe the history and intentions of the partnership.

1.4 What contributions are brought to the programme by the different partners? Provide a short description for each partner related to the joint programme: courses, use of labs and equipment, connection to industry, systems in place for recruitment, admission, quality assurance etc.

Topic	Partner 1	Partner 2	Partner 3
Strengths in relation to the overall subject			
Strengths in relation to industrial partners			
Strengths in relation to administrative capacities of running joint programmes			
Is joint programme part of the internationalisation policy at the university? To what extent and which support is given to joint programmes?			

2 Recruitment base

The aim of this section is to give a realistic view of prospective students and their employability/career options after completed studies.

2.1 Which similar education exists being comparable and competing with the proposed academic partnership?

2.2 What is the demand for the competence provided by the programme for the industry, research institutes or public organisations?

¹ KTH notes

- A joint cooperation shall bring added value and meet a desired study track not available at any of the participating institution alone (courses, research focus, lab equipment, etc.).
- KTH prioritises long term co-operations. A history of cooperative activities between the partners preceding the planned programme is seen as an important indication for project sustainability.

2.3 What is the target group of the programme and where will recruitment take place? Provide a short outline of the recruitment approach.

3 Accreditation of the joint programme

The aim of this section is to ensure that the joint programme will be legally recognised in all partner countries. Does the joint programme require a separate accreditation in any of the participating countries?

Topic	Partner 1	Partner 2	Partner 3	Joint solution
Is accreditation required for the joint programme? Which accreditation body is to be contacted?				
Qualification to be awarded for the joint programme?				
What national regulations govern the requirements for the awarded qualifications are course viable available for courses planned to be part of the joint programme? Please provide copies.				
Provision for ensuring the national qualification in relation to a joint programme, e.g. requirements or guidance for a joint degree certificate.				
How do the joint programmes referred to in the national degree certificate and the diploma supplement?				

4 Financing and sustainability

The aim of this section is to see whether the programme is feasible from a financial perspective: do the costs of running the programme match the expected income from tuition fees and sponsors?

Topic	Partner 1	Partner 2	Partner 3	Joint solution
-------	-----------	-----------	-----------	----------------

² A description of education programme is not applicable in Sweden.

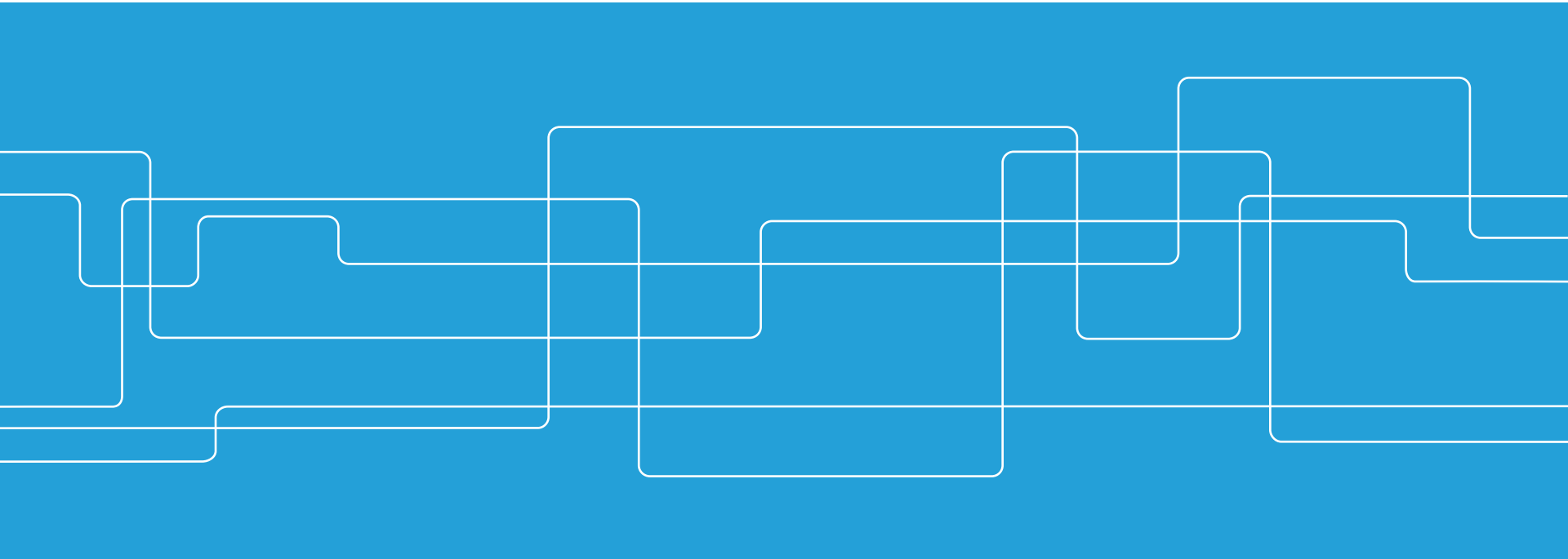
³ If the joint programme is accredited in one country, other accreditation bodies are recommended to follow this decision.

⁴ KTH has the degree according right at Master level, the Qualification title is Technical master programme - Master of Science (see article 109). (https://www.kth.se/en/education/degrees/master-science/109)

⁵ The Swedish legislation allows a joint degree to be presented in a single document or in separate documents referring to each other. The partnership agreement must be in compliance with the requirements stated in the Swedish legislation (SFS 1993:103 and SFS 1994:8 kap 10).



Joint PhD programmes & Joint supervision – Co-tutelle





Co-tutelle – Joint PhD Supervision

Issues to be handled before admitting a candidate for a joint PhD training:

- Funding for the whole training period
- Employment contract
- IPR
- Mobility issues
- Joint dissertation
- Grading committee for a Joint thesis defence
- Regulations for leave of absence
- In case of disruption of the joint programme



T.I.M.E. Project Joint Thesis Defence



Sample, Joint Dissertation Cover





Thank you for listening,
All the best for your joint programmes success

KTH Quality Assurance team for joint programmes
uf-bus@kth.se

Karin Knutsson
kkntssn@kth.se, tel: +46 (0)8 7906814

KTH
Brinellvägen 8
100 44 Stockholm

